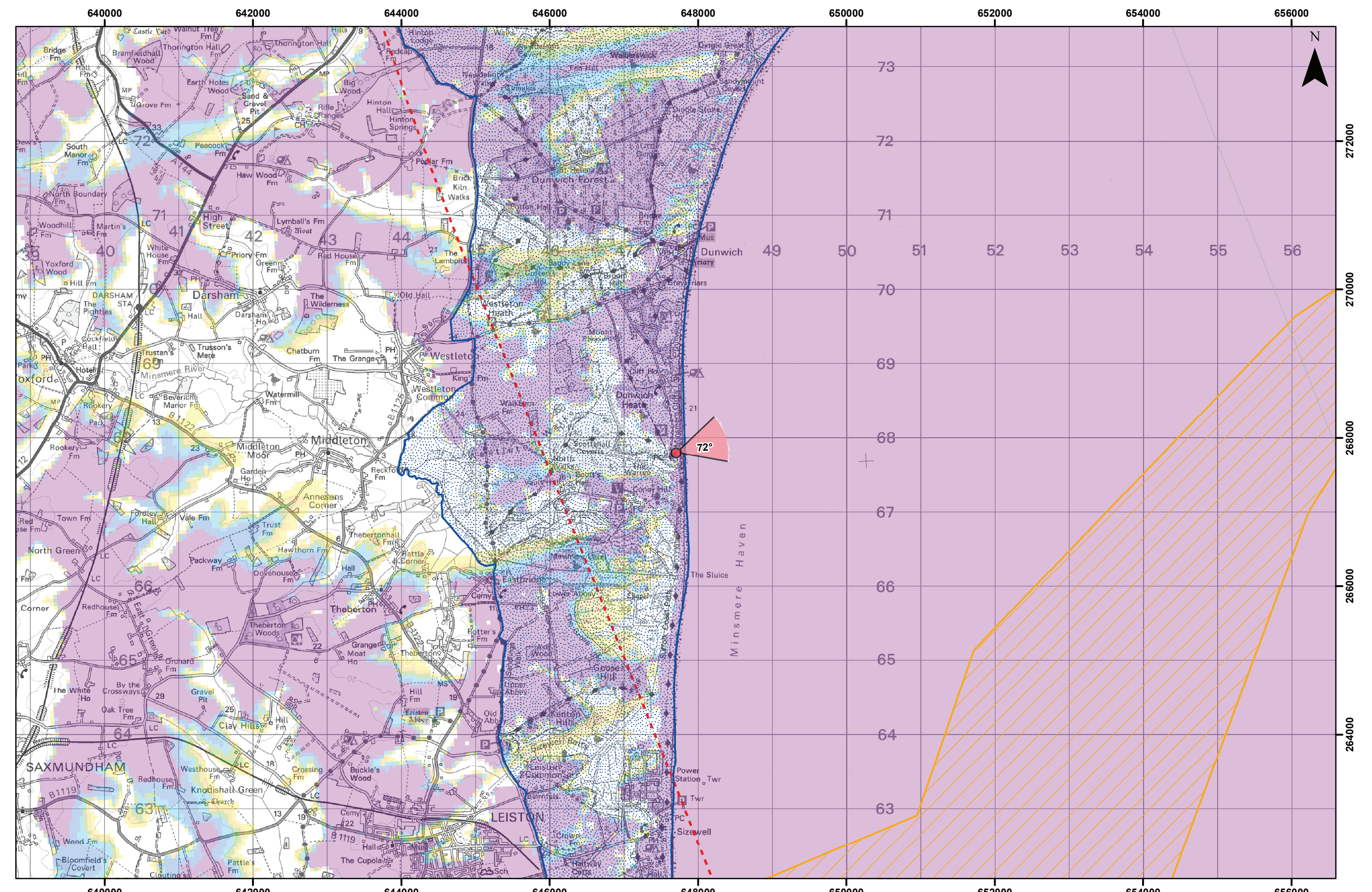


Viewpoint Location Plan - 90 Degree View
Scale: 1:350,000



Viewpoint Location Plan - 53.5 Degree View
Scale: 1:50,000



- Legend**
- Site Boundary
 - Proposed Cable Corridor
 - East Anglia ONE North 300m Wind Turbine Layout
 - 10km Radii
 - 50km SLVIA Study
 - County Boundary
 - District Boundary
 - Suffolk Coast & Heaths AONB
- Cumulative Wind Energy Development:**
- Cumulative Turbine
 - Active/In Operation
 - Pre-planning
- Blade Tip ZTV**
- No. of Blade Tips Theoretically Visible**
- 1 - 10
 - 11 - 20
 - 21 - 30
 - 31 - 40
 - 41 - 50
 - 51 - 53
- ▼ 90° Field of View
 - ▼ 53.5° Field of View

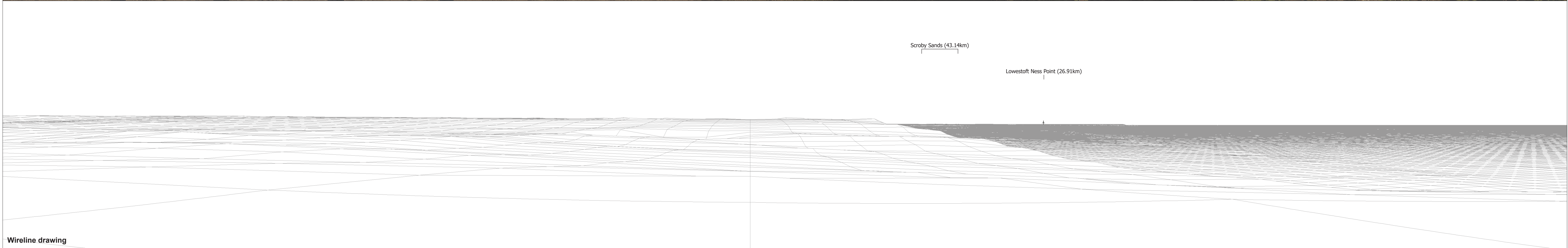
Rev	Date	By	Comment	Approved:	LT
2	28/08/2019	JM	Second issue	Prepared:	TH
1	14/05/2019	TH	First issue	Checked:	SM

© Crown copyright and database rights 2019. Ordnance Survey 100031613. The Crown Estate © Crown Copyright (2019).
© Natural England copyright. Contains Ordnance Survey data © Crown copyright and database right 2019.

This map has been produced to the best known information at the time of issue, and has been produced for your information only. Please consult with the EPR Certificate GIS team to ensure the content is all current before using the information contained on the map. In the fullest extent permitted by law, we accept no responsibility or liability (whether in contract, tort (including negligence) or otherwise in respect of any errors or omissions in the information contained in the map and shall not be liable for any loss, damage or expense caused by such errors or omissions.

ZTV: Created using ESRI ArcGIS 10.8 software and the following data and parameters:
Data: Height 200m
DTM Data: OS Terrain 50
OTM Resolution: 5m
Observer height: 2m
No surface features, such as buildings or trees, were included in the analysis.
Earth curvature and light refraction has been included in calculations.

East Anglia ONE North		
Viewpoint: 8 Dunwich Heath & Beach (Coastguard Cottages)		
Drg No	EA1N-DWF-ENV-REP-IBR-000365	
Rev	2	Datum: WGS 1984
Date	30/08/19	Projection: Zone 31N
Figure	28.32a	

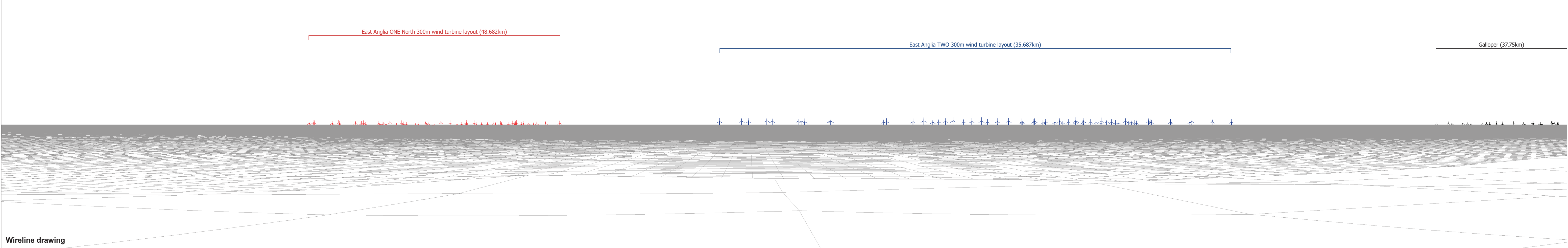


OS reference: 647700 E 267801 N
 Eye level: 18.28 m AOD
 Direction of view: 2°
 Nearest turbine: 48.682 km

Horizontal field of view: 90° (cylindrical projection)
 Principal distance: 522 mm

Camera: Canon EOS 5D Mark II
 Lens: 50mm (Canon EF 50mm f/1.4)
 Camera height: 1.5 m AGL
 Date and time: 13/07/18, 18:42

Figure: 28.32b
 Viewpoint 8: Dunwich Heath & Beach
 (Coastguard cottages)

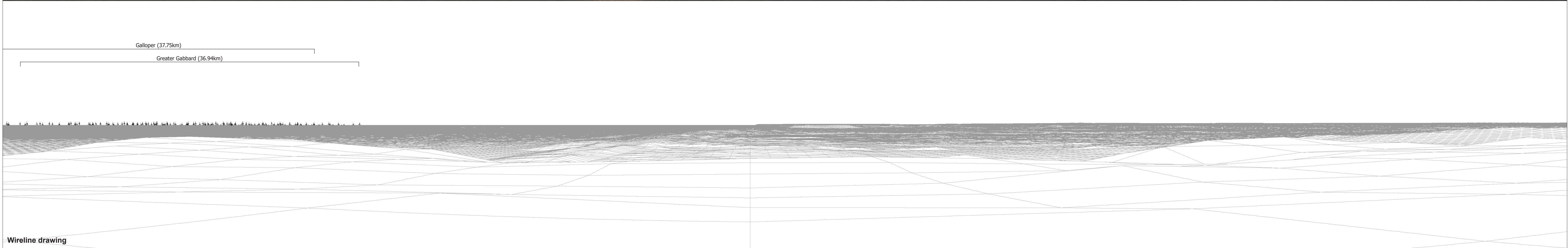


OS reference:	647700 E 267801 N	Horizontal field of view:	90° (cylindrical projection)	Camera:	Canon EOS 5D Mark II	Figure: 28.32c Viewpoint 8: Dunwich Heath & Beach (Coastguard cottages)
Eye level:	18.28 m AOD	Principal distance:	522 mm	Lens:	50mm (Canon EF 50mm f/1.4)	
Direction of view:	92°			Camera height:	1.5 m AGL	
Nearest turbine:	48.682 km			Date and time:	13/07/18, 18:42	



Existing photograph

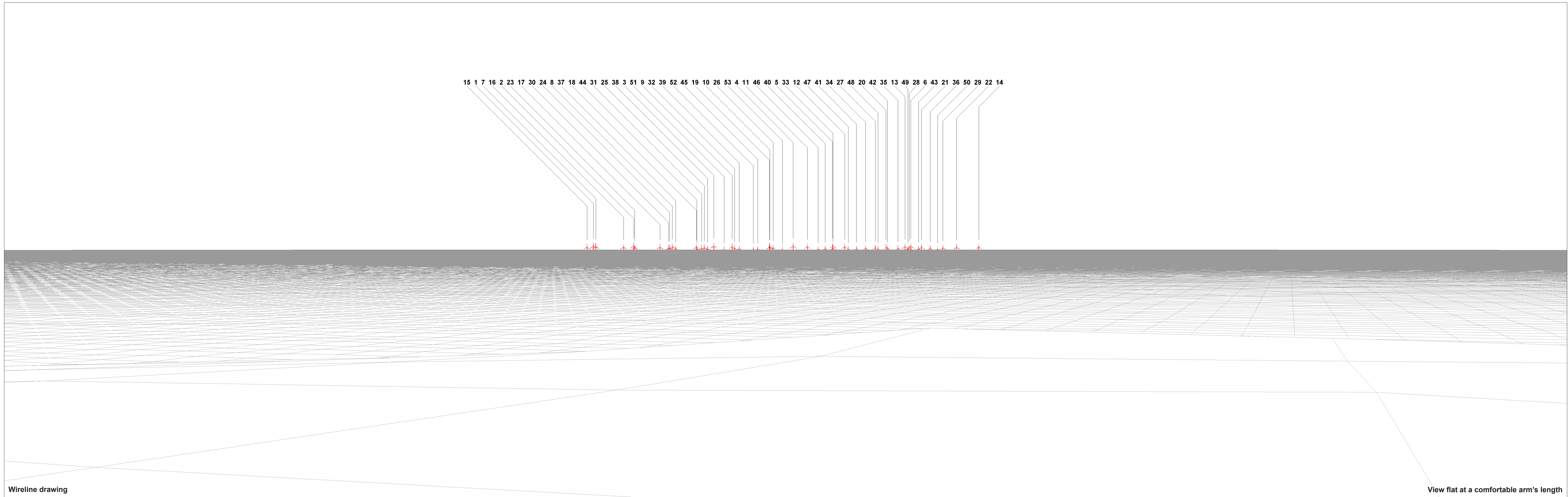
This image provides landscape and visual context only



Wireline drawing

OS reference: 647700 E 267801 N	Horizontal field of view: 90° (cylindrical projection)	Camera: Canon EOS 5D Mark II
Eye level: 18.28 m AOD	Principal distance: 522 mm	Lens: 50mm (Canon EF 50mm f/1.4)
Direction of view: 182°		Camera height: 1.5 m AGL
Nearest turbine: 48.682 km		Date and time: 13/07/18, 18:42

Figure: 28.32d
Viewpoint 8: Dunwich Heath & Beach
(Coastguard cottages)



Wireline drawing

View flat at a comfortable arm's length

OS reference: 647700 E 267801 N
 Eye level: 18.28 m AOD
 Direction of view: 72°
 Nearest turbine: 48.682 km

Horizontal field of view: 53.5° (planar projection)
 Principal distance: 812.5 mm
 Paper size: 841 x 297 mm
 Correct printed image size: 820 x 260 mm

Camera: Canon EOS 5D Mark II
 Lens: 50mm (Canon EF 50mm f/1.4)
 Camera height: 1.5 m AGL
 Date and time: 13/07/18, 18:42

Figure: 28.32e
 Viewpoint 8: Dunwich Heath & Beach
 (Coastguard cottages)



Photomontage

View flat at a comfortable arm's length

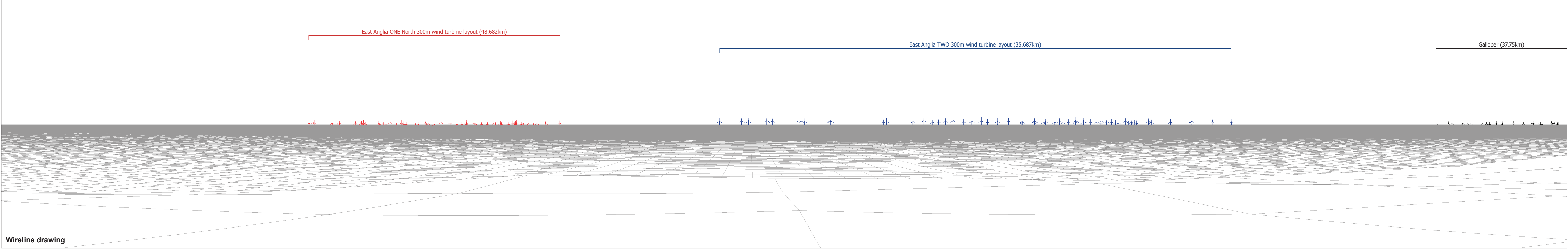
OS reference: 647700 E 267801 N	Horizontal field of view: 53.5° (planar projection)	Camera: Canon EOS 5D Mark II
Eye level: 18.28 m AOD	Principal distance: 812.5 mm	Lens: 50mm (Canon EF 50mm f/1.4)
Direction of view: 72°	Paper size: 841 x 297 mm	Camera height: 1.5 m AGL
Nearest turbine: 48.682 km	Correct printed image size: 820 x 260 mm	Date and time: 13/07/18, 18:42

Figure: 28.32f
Viewpoint 8: Dunwich Heath & Beach
(Coastguard cottages)



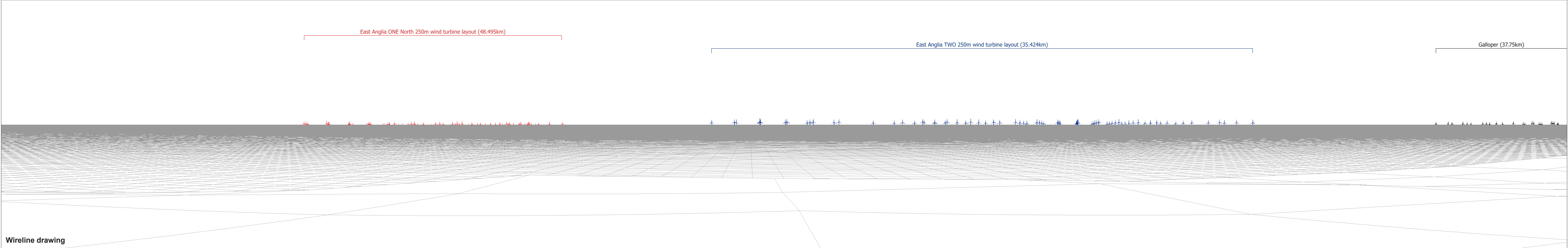
Existing photograph

This image provides landscape and visual context only



Wireline drawing

<p>OS reference: 647700 E 267801 N Eye level: 18.28 m AOD Direction of view: 92° Nearest turbine: 48.682 km</p>	<p>Horizontal field of view: 90° (cylindrical projection) Principal distance: 522 mm</p>	<p>Camera: Canon EOS 5D Mark II Lens: 50mm (Canon EF 50mm f/1.4) Camera height: 1.5 m AGL Date and time: 13/07/18, 18:42</p>	<p>Figure: 28.32g Viewpoint 8: Dunwich Heath & Beach (Coastguard cottages)</p>
------------------------------------------------------------------------------------------------------------------------------------------------------------	-------------------------------------------------------------------------------------------------------------	-------------------------------------------------------------------------------------------------------------------------------------------------------------------------	-------------------------------------------------------------------------------------------------------------------



OS reference: 647700 E 267801 N	Horizontal field of view: 90° (cylindrical projection)	Camera: Canon EOS 5D Mark II
Eye level: 18.28 m AOD	Principal distance: 522 mm	Lens: 50mm (Canon EF 50mm f/1.4)
Direction of view: 92°		Camera height: 1.5 m AGL
Nearest turbine: 48.495 km		Date and time: 13/07/18, 18:42

Figure: 28.32h
Viewpoint 8: Dunwich Heath & Beach
(Coastguard cottages)